

Global trends in quality infrastructure

Dr. Ulrich Harmes-Liedtke

2021 October 25th

TIPS Development Dialogue



TRADE & INDUSTRIAL POLICY STRATEGIES

25 YEARS OF SUPPORTING POLICY DEVELOPMENT
THROUGH RESEARCH AND DIALOGUE

What are we talking about?

Quality infrastructure is a system comprising the organizations (public and private) together with the policies, relevant legal and regulatory framework, and practices needed to support and enhance the quality, safety and environmental soundness of goods, services and processes.



Quality Infrastructure

- ...is required for the effective operation of domestic markets,
- and its international recognition is important to enable access to foreign markets.
- It is a critical element in promoting and sustaining economic development,
- ...as well as environmental and social wellbeing.
- It relies on metrology, standardisation, accreditation, conformity assessment, and market surveillance.

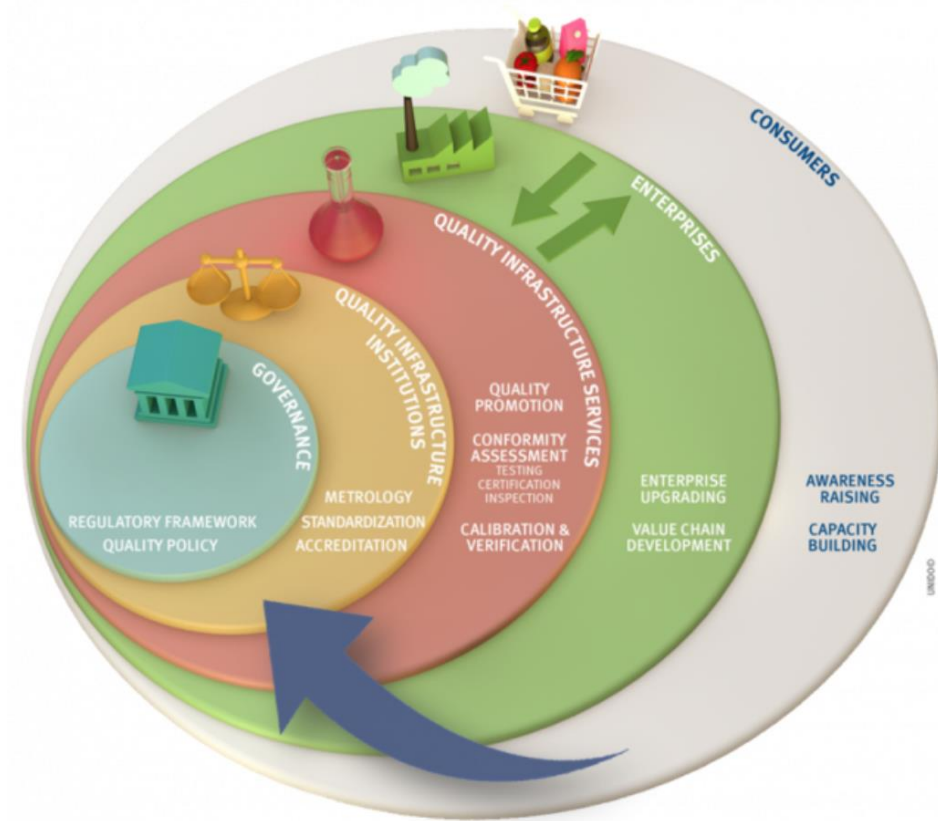


Image: UNIDO

The shift from TI to QI

The term quality infrastructure:

replaces previous terms such as Technical Infrastructure or Standardisation, Quality Assurance, Accreditation and Metrology Infrastructure (SQAM).

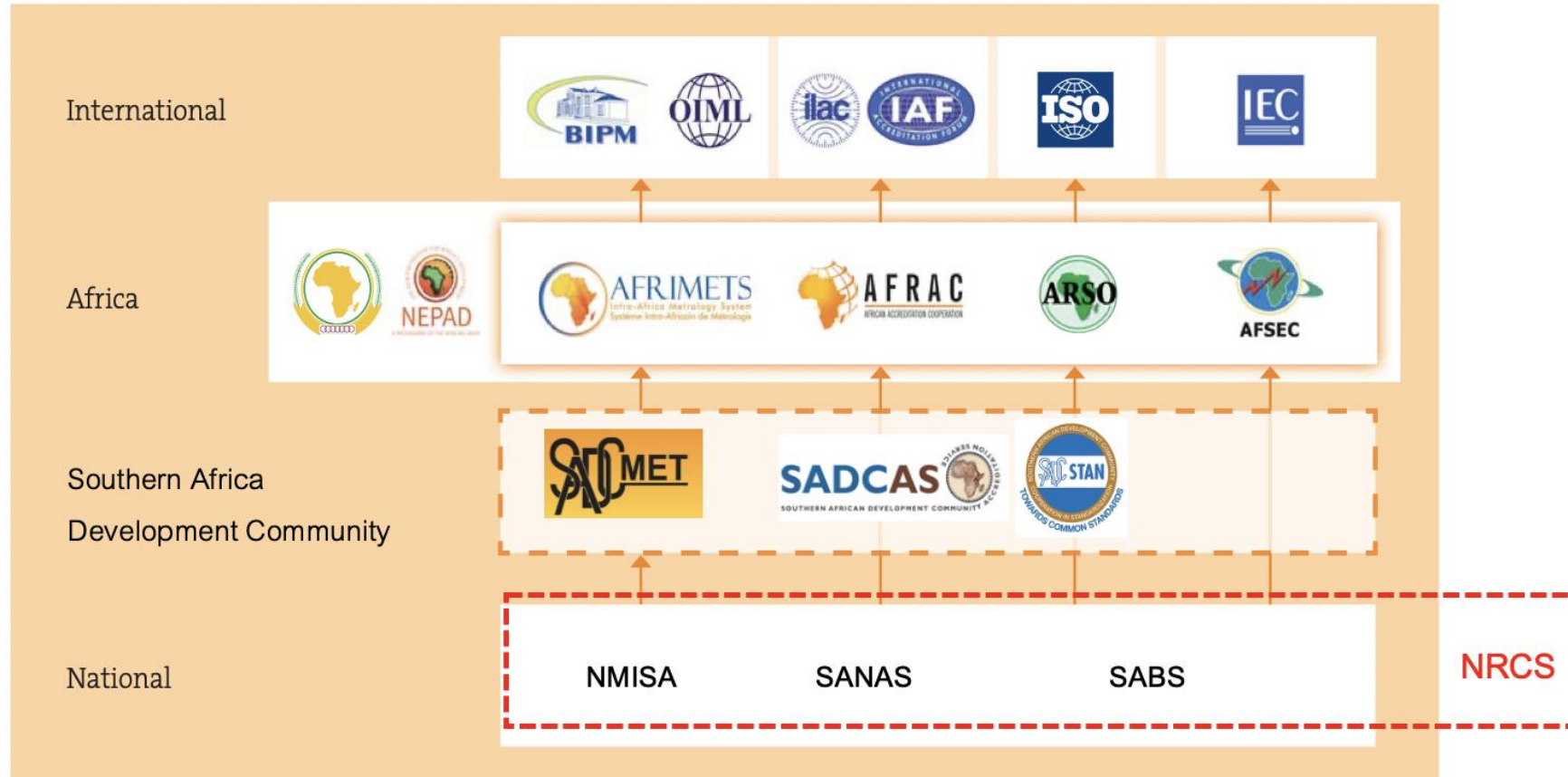
offers an internationally uniform terminology

does emphasise the overall system. No component is explicitly mentioned or highlighted; like standards in SQAM.

covers all components and overcomes the problem of four-letter abbreviations.

justifies the need for a national quality policy (NQP).

International embedding of South African QI



What is the role of QI a post covid world?

QI RESTORES TRUST IN INTERNATIONAL TRADE.

QI MITIGATES RISK AND FOSTERS THE RESILIENCE OF COMPANIES AND ORGANISATIONS.

QI SUPPORTS DIGITALISATION AND DIGITALISES ITSELF.

QI CATALYSES INNOVATIONS IN INDUSTRY AND SERVICES.

QI PROVIDES ORIENTATION FOR A SOCIO-ECOLOGICAL TRANSFORMATION.

Inspiring practices: What can South African QI learn from and with other countries?

Global Quality Infrastructure Index - World Overview

Coverage: 184 economies

